

LEASE > OFFICE

2,465 SF Office Space



931 HADDON AVENUE, COLLINGSWOOD, NEW JERSEY



Building Features

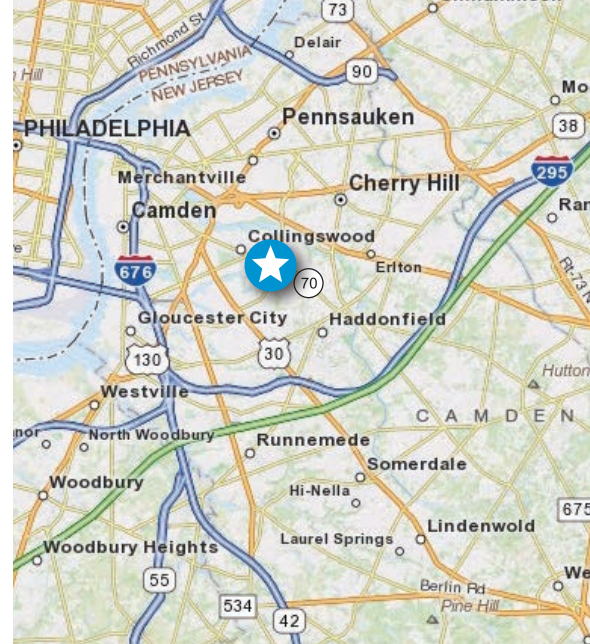
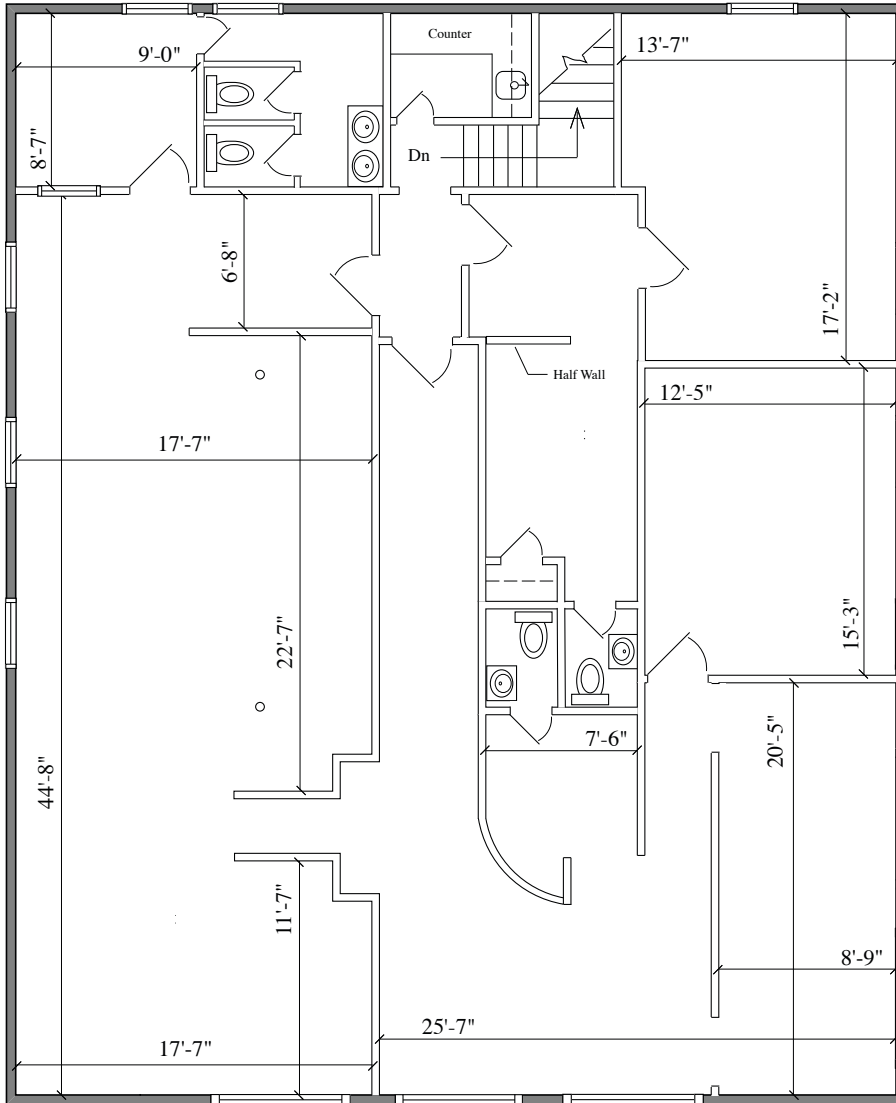
- > 5,000 SF two-story office building with 2,465 SF available for Lease
- > Well maintained
- > Private parking lot
- > Walking distance to PATCO hi-speed line and restaurants
- > Quick access to Route 30 & 70; close proximity to Center City Philadelphia
- > Located on Haddon Avenue in Collingswood business district

Contact

EVAN ZWEBEN
VICE PRESIDENT
+1 856 414 1450
MOUNT LAUREL, NJ
evan.zweben@colliers.com

COLLIERS INTERNATIONAL
1317 Route 73, Suite 109
Mount Laurel, NJ 08054
+1 856 234 9300
www.colliers.com/mountlaurel

FLOOR PLAN: 2ND FLOOR AVAILABLE SUITE



Contact

EVAN ZWEBEN
VICE PRESIDENT
+1 856 414 1450
MOUNT LAUREL, NJ
evan.zweben@colliers.com



COLLIERS INTERNATIONAL
1317 Route 73, Suite 109
Mount Laurel, NJ 08054
+1 856 234 9300

www.colliers.com/mountlaurel