


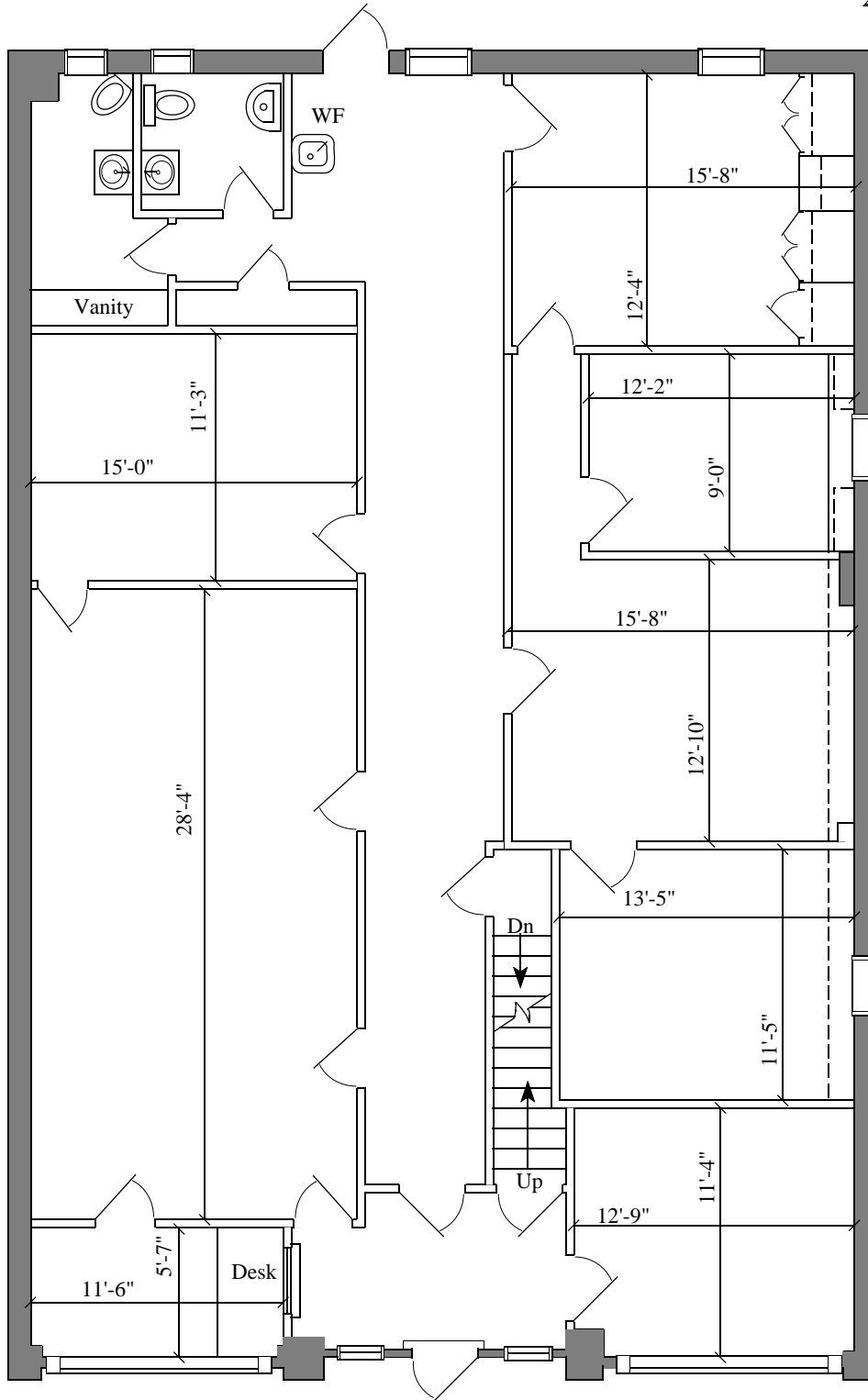
633 ELMER ST.
VINELAND, NJ

DETAILED FLOOR PLANS ¥			ROOMINDERS ¥ REAL ESTATE MARKETING
p 856.429.4233	web - www.roominders.com		f 856.429.8118
e jon@roominders.com	measured by Jon Hitchner 8.11.06		Revised -
* Actual measurements may vary		* Not to be used for construction purposes	
* Position of walls and fixtures are approximate		* Only to be used with written permission	

APPROXIMATE
SQUARE FEET

7,141

FIRST FLOOR
2,389 SQ. FT.



Jon Hitchner -
ROOMINDERS

633 ELMER ST.
VINELAND, NJ

DETAILED FLOOR PLANS ¥  ROOMINDERS ¥ REAL ESTATE MARKETING

p 856.429.4233

web - www.roominders.com

f 856.429.8118

e jon@roominders.com

measured by Jon Hitchner 8.11.06

Revised -

* Actual measurements may vary

* Not to be used for construction purposes

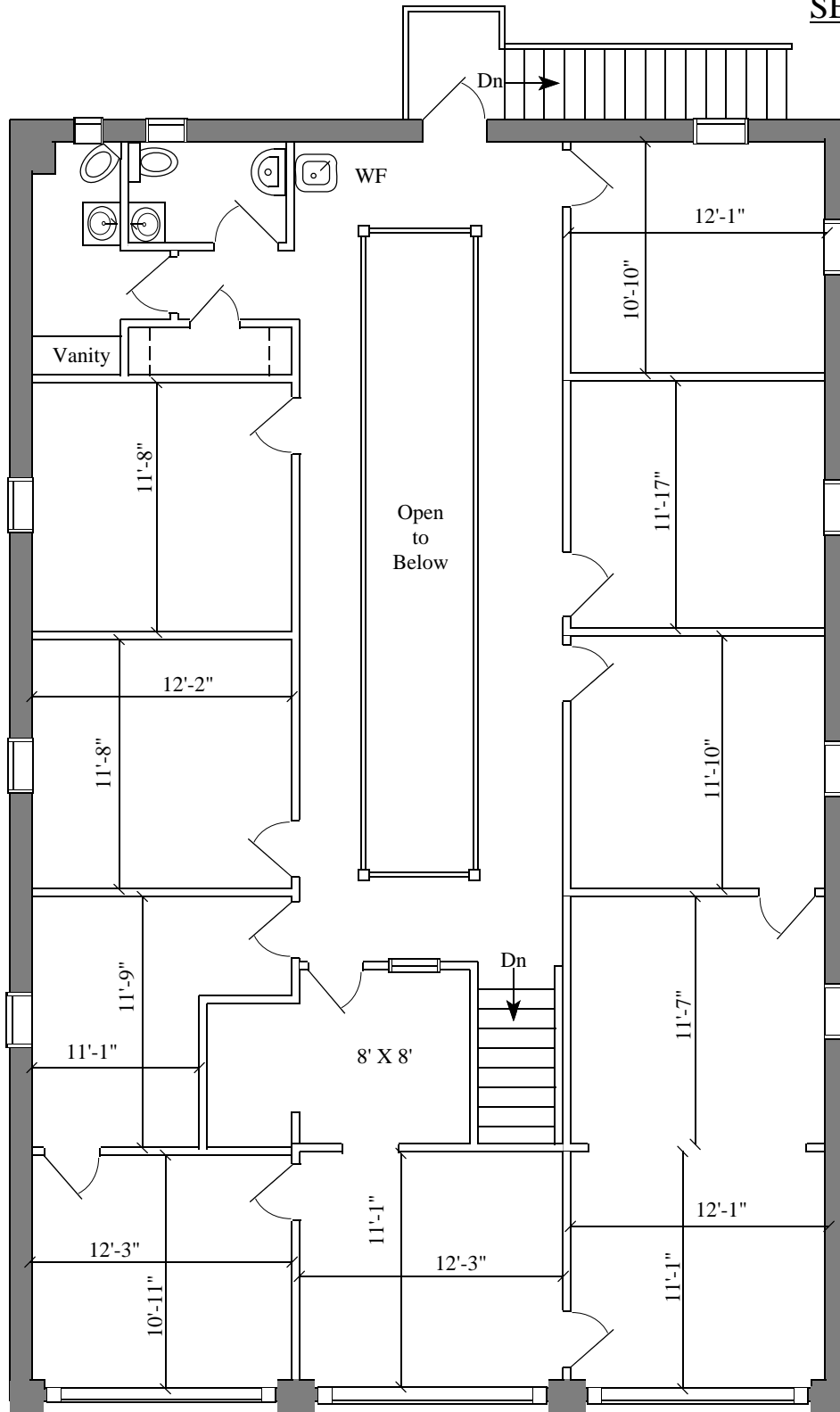
* Position of walls and fixtures are approximate

* Only to be used with written permission

APPROXIMATE
SQUARE FEET

7,141

SECOND FLOOR
2,389 SQ. FT.



Jon Hitchner -
ROOMINDERS

633 ELMER ST.
VINELAND, NJ

DETAILED FLOOR PLANS ¥



ROOMINDERS ¥

REAL ESTATE MARKETING

APPROXIMATE
SQUARE FEET

p 856.429.4233

web - www.roominders.com

f 856.429.8118

7,141

e jon@roominders.com

measured by Jon Hitchner 8.11.06

Revised -

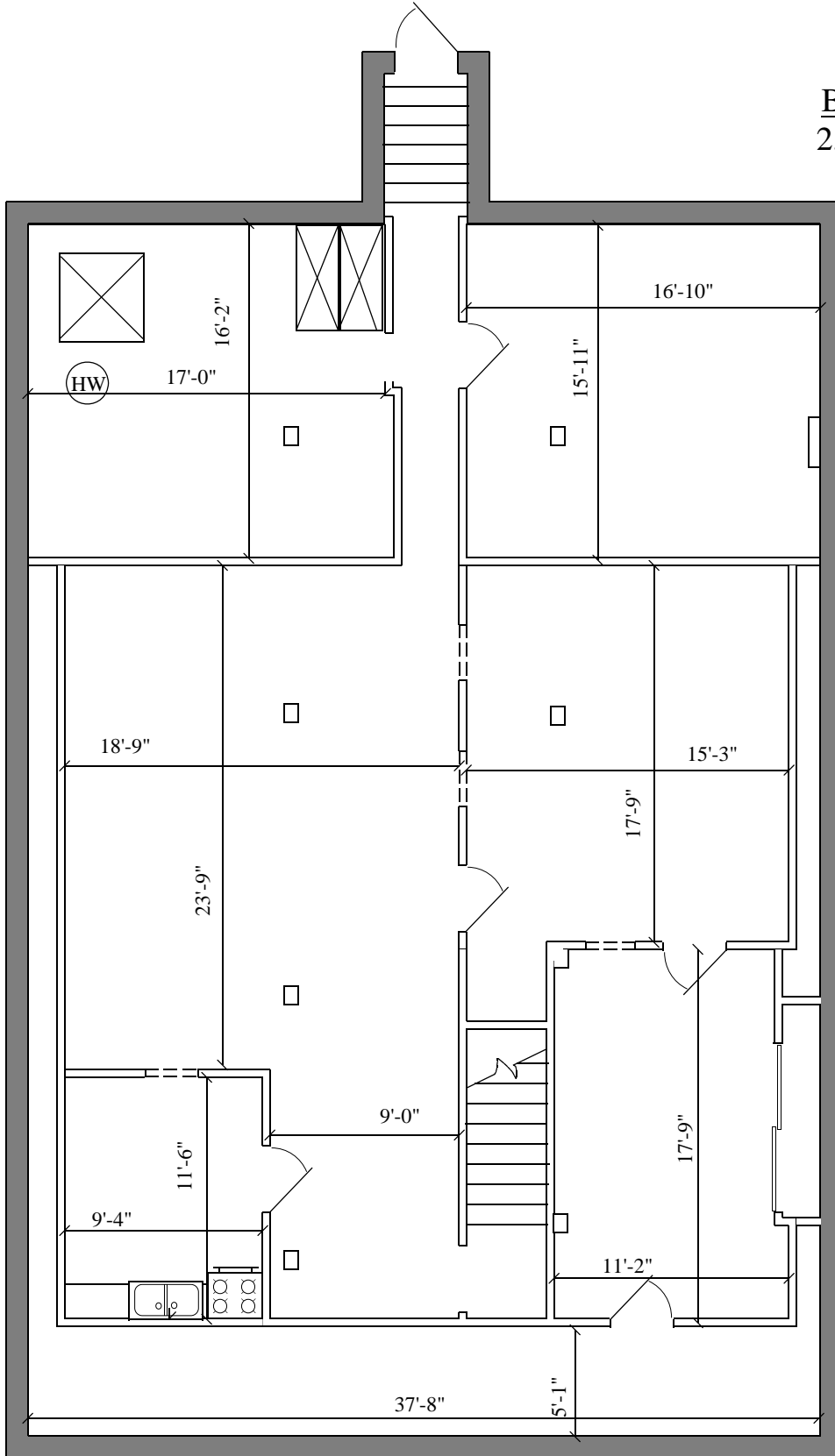
* Actual measurements may vary

* Not to be used for construction purposes

* Position of walls and fixtures are approximate

* Only to be used with written permission

BASEMENT
2,363 SQ. FT.



Jon Hitchner -
ROOMINDERS